

ROLE OF DIET IN T2DM

- INDIVIDUAL STUDIES MAY CONFLICT

- LIMITATIONS OF METHODS...

- ...DILUTE MEASURES OF EFFECT

PROBLEMATIC
 for RACIALIZED COMMUNITIES

ILLUSTRATED BY
 ALEX SAWATZKY, PHD

T2DM + INDIGENOUS PEOPLES

CONSIDER CONTEXT

INTER-GENERATIONAL TRAUMA

COLONIZATION

NUTRITION TRANSITION

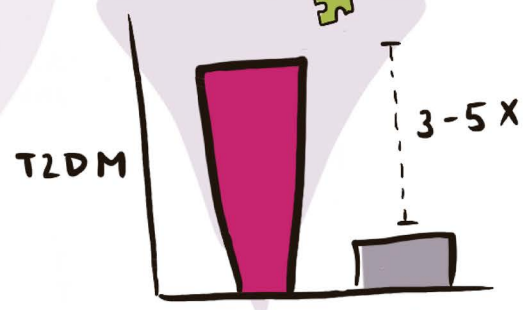


ENVIRONMENTAL DEPRIVATION

CLIMATE CHANGE

LOSS OF CULTURAL IDENTITY

COMPLEXITIES OF FOOD INSECURITY



INDIGENOUS COMMUNITIES

OTHER CANADIANS



BEST PRACTICES

MEASUREMENT

- CHOOSE APPROPRIATE MEASURES
- DESIGN, MODIFY, & VALIDATE w COMMUNITY PARTNERS



INTERVENTION & MANAGEMENT

- UNDERSTAND COMPLEXITIES
- COLLABORATE w LOCAL KNOWLEDGE HOLDERS



BETTER OUTCOMES

#CNSTHEMATIC2021

